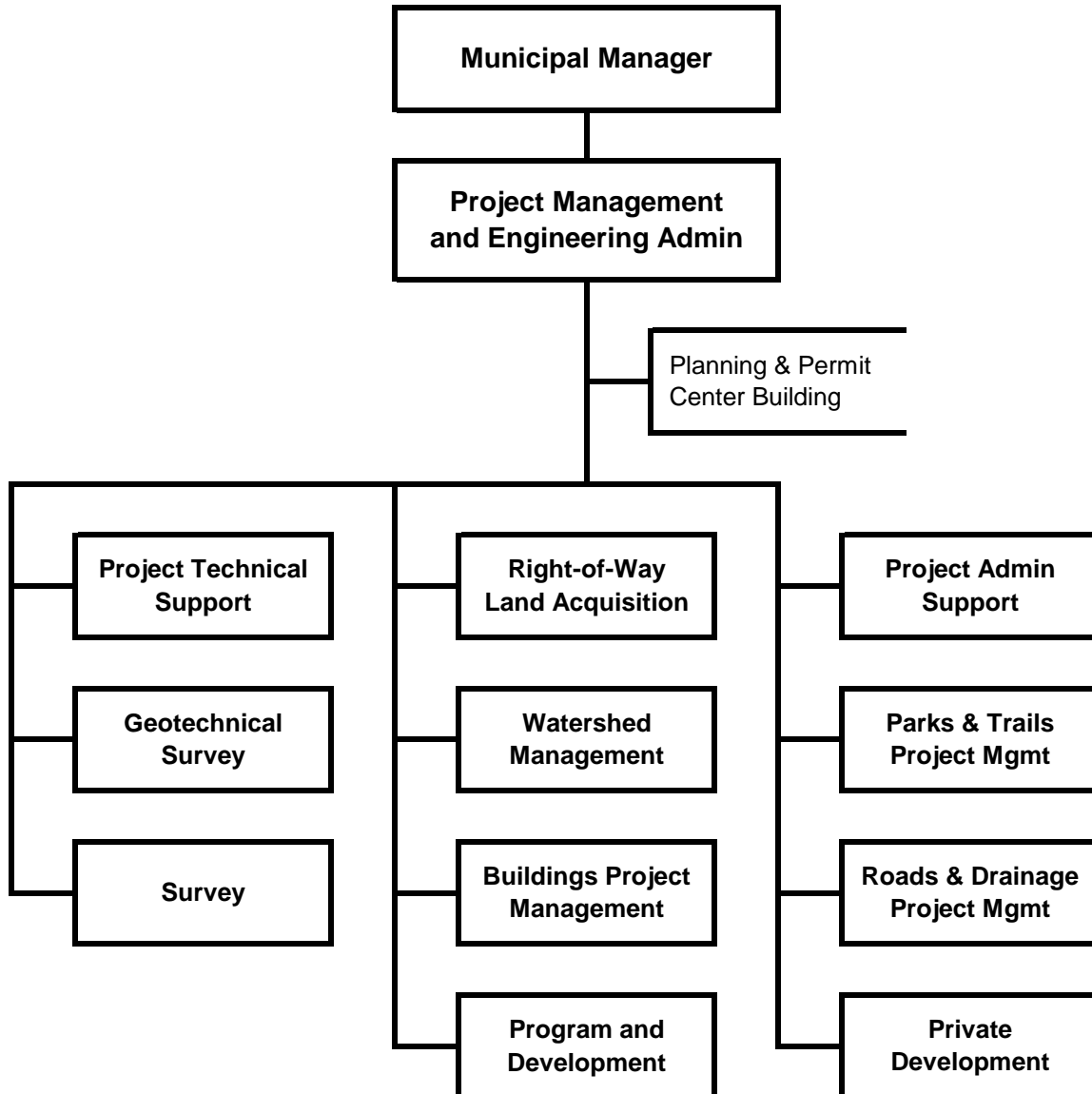

PROJECT MANAGEMENT AND ENGINEERING



2007 Updated General Government Operating Budget

Project Management & Engineering

Resource Plan

Description	2006 Revised	2007 Approved	2007 Updated
Financial Summary			
Administration	\$ 492,900	\$ 499,040	\$ 540,100
Project Technical Support	799,370	866,990	825,960
Geotechnical Survey	289,980	305,990	329,450
Survey	218,280	237,930	241,860
Right-of-Way Land Acquisition	242,530	264,700	263,580
Watershed Management	1,615,770	1,366,800	1,404,840
Buildings Project Management	108,250	117,760	117,920
Program & Development	362,190	383,670	389,140
Project Admin Support	541,910	593,500	585,380
Parks and Trails Project Management	274,280	305,440	286,780
Roads & Drainage Project Management	1,574,620	1,706,890	1,771,630
Private Development	647,440	700,560	669,610
Operating Cost	7,167,520	7,349,270	7,426,250
Add Debt Service	-	-	-
Direct Organization Cost	7,167,520	7,349,270	7,426,250
Charges From/(To) Others	(4,519,200)	(4,827,610)	(4,873,350)
Function Cost	2,648,320	2,521,660	2,552,900
Less Program Revenues	1,466,750	1,386,560	1,386,560
Net Program Cost	\$ 1,181,570	\$ 1,135,100	\$ 1,166,340
Personnel Summary			
Full-Time Employees	62	62	62
Part-Time Employees	-	-	-
Temporary Employees	3	3	3
Total Employees	65	65	65
Resource Costs by Category			
Personal Services	\$ 6,131,120	\$ 6,643,650	\$ 6,605,310
Supplies	75,410	75,410	100,960
Other Services *	1,259,260	928,480	1,018,250
Depreciation & Amortization	-	-	-
Capital Outlay	9,340	9,340	9,340
Total Direct Cost	7,475,130	7,656,880	7,733,860
Less Vacancy Factor	(307,610)	(307,610)	(307,610)
Add Debt Service	-	-	-
Total Direct Organization Cost	\$ 7,167,520	\$ 7,349,270	\$ 7,426,250
* Travel for this department included in the Other Services category	\$ 2,500	\$ 2,500	\$ 2,500

2007 Updated General Government Operating Budget

Project Management & Engineering

Reconciliation From 2006 Revised Budget to 2007 Updated Budget

	Direct Costs	Positions		
		FT	PT	T
<i>2006 Revised Budget</i>	\$ 7,167,520	62		3
<i>2006 One-Time Requirements</i>				
- Hillside District Plan	(300,000)			
<i>Debt Service Changes - Not Applicable</i>				
<i>Changes in Existing Programs for 2007</i>				
- Salary and benefits adjustments	474,190			
<i>2007 Continuation Level</i>	\$ 7,341,710	62	-	3
<i>Transfers (To)/ From Other Agencies</i>				
- None				
<i>2007 Program/Funding Changes</i>				
- Fleet vehicle fuel distribution	25,550			
- Fleet vehicle rentals	58,990			
<i>2007 Updated Budget</i>	<u>\$ 7,426,250</u>	<u>62</u>	<u>-</u>	<u>3</u>

2007 Updated General Government Operating Budget

Project Management & Engineering

OPERATING GRANT FUNDED PROGRAMS

GRANT PROGRAM	FY 2006				FY 2007				Latest Grant Expiration
	Anticipated Amount	resources used FT	PT	T	Anticipated Amount	resources used FT	PT	T	
TOTAL GRANT FUNDING	\$ 593,234	1	-	-	\$ 623,704	3	-	-	
TOTAL PROJECT MANAGEMENT & ENGINEERING GENERAL GOVERNMENT OPERATING BUDGET	\$ 7,167,520	62	-	3	\$ 7,426,250	62	-	3	
	\$ 7,760,754	63	-	3	\$ 8,049,954	65	-	3	

GRANT FUNDING MAY REPRESENT 8.28% OF THE DEPARTMENT'S REVISED 2006 DIRECT COST OPERATING BUDGET.

GRANT FUNDING MAY REPRESENT 8.40% OF DEPARTMENT'S DIRECT COST IN THE UPDATED 2007 OPERATING BUDGET.

NPDES PERMIT REIMBURSEMENT \$ 298,704 \$ 298,704 2 2007

- Reimbursement from State of Alaska for Municipal efforts managed and performed as required by federal NPDES Permit.

PCSRF CREEKS COMMUNITY DEVELOPMENT MANAGER \$ 75,000 1 \$ 200,000 1 Jun-09

- Reimbursement from State of Alaska for Anchorage efforts of oversight, coordination and outreach regarding Pacific Coastal Salmon Recovery.

U.S. FISH AND WILDLIFE REIMBURSABLE GRANTS

- Little Campbell Creek Watershed Grant to subsidize efforts in creating a watershed plan. \$ 10,000 \$ 25,000 Dec-07

- Rain Garden Grant will reimburse efforts to promote environmental stewardship in the city. \$ 35,000 \$ - 2006

STATE OF ALASKA REIMBURSEMENT GRANTS

- Little Campbell Creek Sediment Study grant will reimburse efforts to identify sediment sources in Little Campbell Creek. \$ 32,000 \$ - 2006

- Water Quality Education Grant will reimburse Municipal efforts to inform the public on water quality issues impacting Anchorage creeks. \$ 42,530 \$ - 2006

- Girdwood Flood Hazard Mapping Grant will reimburse efforts to perform a flood hazard study for Furrow and Glacier Winter Creeks. \$ 50,000 \$ 100,000 Jun-08

RABBIT CREEK WATERSHED ASSESSMENT \$ 50,000 \$ - 2006

- U. S. D. A. reimbursement of efforts to accomplish Rabbit Creek watershed assessment.

Total 593,234 1 - - \$ 623,704 3 - -